

# PowerPlay™ TP

FIXED RESILIENT SYSTEMS

A performance sports floor system with shock absorption and resilience at the highest value. This unique combination of high performance, economics and short installation time enhances athletic effectiveness in competition gymnasiums, multipurpose rooms and dance floors. Specify PowerPlay™ TP in an EN certified version where maximum performance is essential.



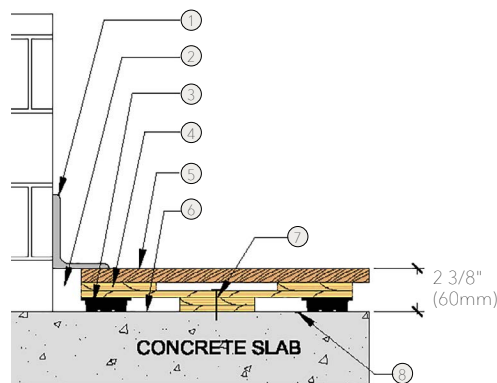
# PowerPlay™ TP

An anchored performance sports floor system consisting of vapor barrier, pre-engineered cushioned panels and Acer MFMA maple flooring.



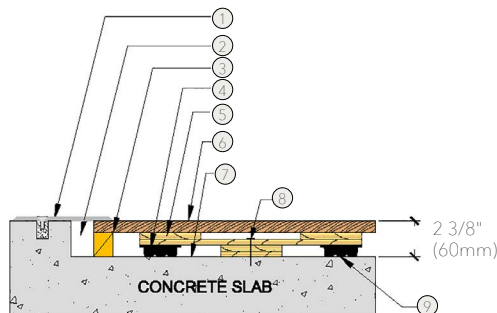
- 1. Precision-milled Acer Maple
- 2. PowerPlay™ Plywood Panels
- 3. TriPower™ Pad
- 4. Heavy-Duty Concrete Fastener

## WALL BASE



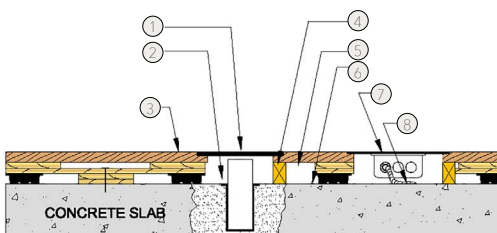
- 1. 3" x 4" (76mm x 101mm) Vent Cove Base
- 2. 1 1/2" (38mm) Min. Expansion Space
- 3. 3/4" (19mm) TriPower™ Pad
- 4. Pre-Engineered PowerPlay™ Panel
- 5. MFMA Maple Flooring 25/32" x 2 1/4" (20mm x 57mm)
- 6. Vapor Barrier
- 7. Concrete Fastener
- 8. Vapor Barrier

## THRESHOLD



- 1. 1/4" (6mm) Aluminum Threshold
- 2. 1 1/2" (38mm) Min. Expansion Space
- 3. Solid Blocking
- 4. 3/4" (19mm) TriPower™ Pad
- 5. Pre-Engineered PowerPlay™ Panel
- 6. MFMA Maple Flooring 25/32" x 2 1/4" (20mm x 57mm)
- 7. Vapor Barrier
- 8. Concrete Fastener
- 9. 3/4" (19mm) TriPower™ Pad

## EQUIPMENT



- 1. Floor Plate
- 2. 1 1/2" (38mm) Min. Expansion Space Required at all Insert & Electrical Penetrations
- 3. MFMA Maple Flooring 25/32" x 2 1/4" (20mm x 57mm)
- 4. Solid Blocking at Floor Insert Penetrations
- 5. Pre-Engineered PowerPlay™ Panel
- 6. Vapor Barrier
- 7. Flush Electrical Box or Scorer's Box
- 8. Flexible Conduit

Anchorage

Certified

Green Status and LEED Contributors

Optional Versions

Resilience

Slab Depression

Subfloor Construction

System Type

Testing Laboratory

U.S. Patent #

Warranty

Drill and Pin



- FSC® Certified Maple - MRC7
- FSC® Certified Subfloor Components - MRC7
- EQ - 4.2
- Regional Materials - MRC5.1 & 5.2

PowerPlay LP, VLP, II

TriPower™ or AcerFlex Pads  
\*Other pad options available.  
Contact your Regional Sales Manager.

3/4" (19mm) TriPower™ Pad, PowerPlay TP & II

- 25/32" (20mm) flooring - 2 3/8" (60mm)
- 33/32" (26mm) flooring - 2 5/8" (67mm)

Pre-manufactured panels

Fixed Resilient



Pending

Lifetime available

*It is the policy of Acer Flooring to continuously improve its line of products. Therefore, Acer Flooring reserves the right to change, modify or discontinue systems, specifications and accessories of all products at any time without notice or obligation to purchaser.*



see us at  
**Sweets.com**

