

# PowerPlay™ LP

FIXED RESILIENT SYSTEMS

A low profile performance sports floor system with shock absorption and resilience at the highest value. This unique combination of high performance, economics and short installation time enhances athletic effectiveness in competition gymnasiums, multipurpose rooms and dance floors.



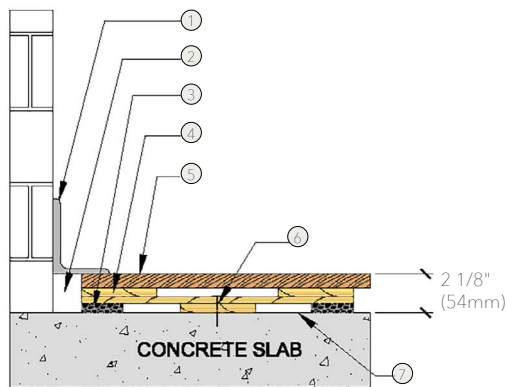
# PowerPlay™ LP

An anchored performance sports floor system consisting of pre-engineered cushioned panels and Acer MFMA maple flooring.



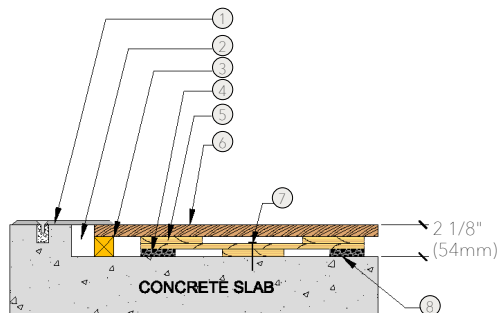
- 1. Precision-milled Acer Maple
- 2. Pre-Engineered PowerPlay™ Panels
- 3. Resilient Pad
- 4. Heavy-Duty Concrete Fastener

## WALL BASE



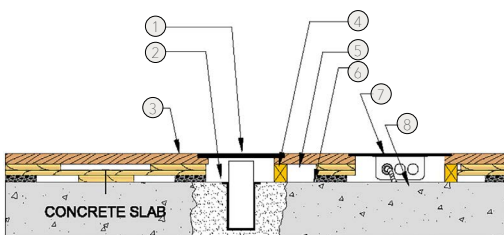
- 1. 3" x 4" (76mm x 101mm) Vent Cover Base
- 2. 1 1/2" (38mm) Min. Expansion Space
- 3. Resilient Pad
- 4. Pre-Engineered PowerPlay™ Panel
- 5. MFMA Maple Flooring 25/32" x 2 1/4" (20mm x 57mm)
- 6. Concrete Fastener
- 7. Vapor Barrier

## THRESHOLD



- 1. 1/4" (6mm) Aluminum Threshold
- 2. 1 1/2" (38mm) Min. Expansion Space
- 3. Solid Blocking
- 4. Resilient Pad
- 5. Pre-Engineered PowerPlay™ Panel
- 6. MFMA Maple Flooring 25/32" x 2 1/4" (20mm x 57mm)
- 7. Concrete Fastener
- 8. Vapor Barrier

## EQUIPMENT



- 1. Floor Plate
- 2. 1 1/2" (38mm) Min. Expansion Space Required at all Insert & Electrical Penetrations
- 3. MFMA Maple Flooring 25/32" x 2 1/4" (20mm x 57mm)
- 4. Solid Blocking at Floor Insert Penetrations
- 5. Pre-Engineered PowerPlay™ Panel
- 6. Vapor Barrier
- 7. Flush Electrical Box or Scorer's Box
- 8. Flexible Conduit

Anchorage

Certified

Drill and Pin



Green Status and LEED Contributors



- FSC® Certified Maple - MRC7
- FSC® Certified Subfloor Components - MRC7
- EQ - 4.2
- Regional Materials - MRC5.1 & 5.2

Optional Versions

PowerPlay LP, VLP, II

Resilience

1/2" (12mm) TriPower™, EcoDIN Pads  
\*Other pad options available. Contact your Regional Sales Manager.

Slab Depression

7/16" (11mm) EcoDIN, 1/2" (12mm) TriPower™ Pads, PowerPlay™ LP  
• 25/32" (20mm) flooring - 2 1/8" (54mm)  
• 33/32" (26mm) flooring - 2 3/8" (60mm)

Subfloor Construction

Pre-manufactured panels

System Type

Fixed Resilient

Testing Laboratory



U.S. Patent #

Pending

Warranty

Lifetime available

*It is the policy of Acer Flooring to continuously improve its line of products. Therefore, Acer Flooring reserves the right to change, modify or discontinue systems, specifications and accessories of all products at any time without notice or obligation to purchaser.*



see us at [Sweets.com](http://Sweets.com)

