

Anchored PowerSleeper™

FIXED RESILIENT SYSTEMS

Anchored PowerSleeper™ is an anchored system that fully engages the resilient pad ensuring uniform performance and increased structural stability. This system combines pre-engineered sleepers with a plywood underlayment for greater dimensional strength and stability. It is suitable for new and retrofit sports floor applications and commercial projects.



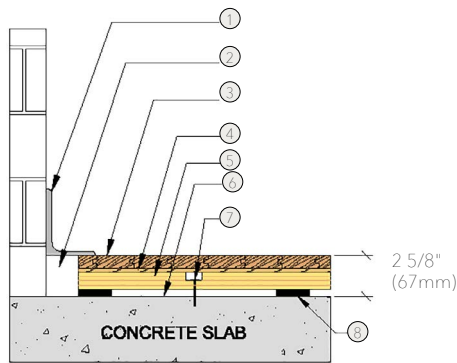
Anchored PowerSleeper™

Anchored PowerSleeper™ is the perfect, traditional basketball floor where maximum performance and structural integrity are essential.



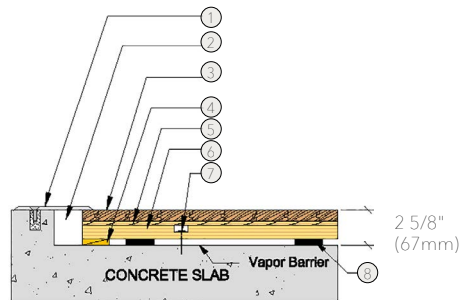
- | | |
|---|-----------------------------------|
| 1. Precision-milled Acer Maple | 3. Pre-Engineered Plywood Sleeper |
| 2. 15/32" (12mm) NOM. Exposure 1, APA Rated Sheathing | 4. EcoDIN Pad |
| | 5. Non-Squeak Anchor & Washer |

WALL BASE



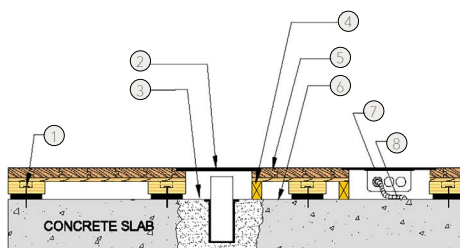
- 3" x 4" (76mm x 101mm) Vent Cove Base
- 2" (51mm) Min. Expansion Space
- MFMA Maple Flooring 25/32" x 2 1/4" (20mm x 57mm)
- 15/32" (12mm) Underlayment
- Pre-Engineered Plywood Sleeper
- Vapor Barrier
- Steel Concrete Anchor with Bushing
- 7/16" (11mm) EcoDIN Pad

THRESHOLD



- 1/4" (6mm) Aluminum Threshold
- 2" (51mm) Min. Expansion Space
- MFMA Maple Flooring 25/32" x 2 1/4" (20mm x 57mm)
- Solid Blocking
- 15/32" (12mm) Underlayment
- Pre-Engineered Plywood Sleeper
- Steel Concrete Anchor with Bushing
- 7/16" (11mm) EcoDIN Pad

EQUIPMENT



- Steel Concrete Anchor with Bushing
- Floor Plate
- 1 1/2" (38mm) Min. Expansion Space Required at all Insert & Electrical Penetrations
- Solid Blocking at Floor Insert Penetration
- MFMA Maple Flooring 25/32" x 2 1/4" (20mm x 57mm)
- Vapor Barrier
- Flush Electrical Box or Scorer's Box
- Flexible Conduit

Anchorage

Certified



Green Status and LEED Contributors



- FSC® Certified Maple - MRC7
- FSC® Certified Subfloor Components - MRC7
- EQ - 4.2
- Regional Materials - MRC5.1 & 5.2

Resilience

7/16" EcoDIN,
1/2" TriPower™,
3/4" TriPower™, AcerFlex

Slab Depression

7/16" (11mm) EcoDIN
• 25/32" (20mm) flooring – 2 5/8" (67mm)
• 33/32" (26mm) flooring – 2 7/8" (73mm)
1/2" (12mm) TriPower™ Pad
• 25/32" (20mm) flooring – 2 5/8" (67mm)
• 33/32" (26mm) flooring – 2 7/8" (73mm)

System Type

Fixed Resilient / Floating

Optional Construction

Contact your Regional Sales Manager for system configurations.

Subfloor Construction

Sleeper Plywood

Testing Laboratory



U.S. Patent

Pending

Warranty

Lifetime available

It is the policy of Acer Flooring to continuously improve its line of products. Therefore, Acer Flooring reserves the right to change, modify or discontinue systems, specifications and accessories of all products at any time without notice or obligation to purchaser.



see us at
Sweets.com

