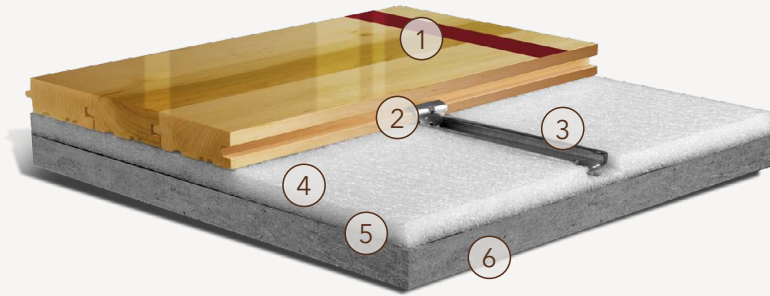


# AacerLoc™

## FIXED SYSTEMS

AacerLoc™ is a fixed, low profile system with fast ball response, longevity and integrated expansion provisions to make it the system least prone to buckling. Ideal for retrofits and remodels.





- 1. Precision-milled Acer Maple
- 2. AacerLoc™ Clip
- 3. Heavy 16 gauge Steel Channel
- 4. Channeled Performance Foam
- 5. 6mil Polyethylene Vapor Barrier
- 6. Concrete

## Anchorage

Green Status and LEED Contributors

## Clip and Channel



- FSC® Certified Maple - MRc7
- FSC® Certified Subfloor Components - MRc7
- EQ - 4.2
- Regional Materials - MRc5.1 & 5.2

## Resilience

1/2" (12mm) Channeled Performance Foam

## Slab Depression

33/32" (26mm) flooring – 1 1/2" (38mm)  
27/32" (22mm) flooring – 1 1/4" (32mm)

## Subfloor Construction

Foam and Steel Channel

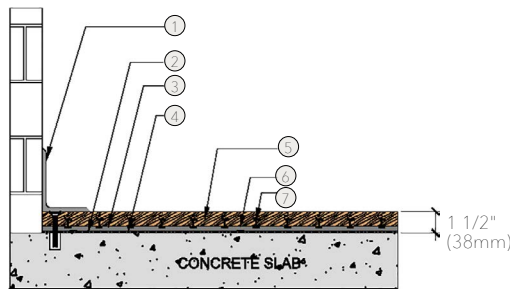
## System Type

Fixed

## Warranty

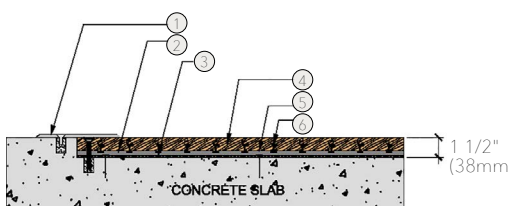
Lifetime available

## WALL BASE



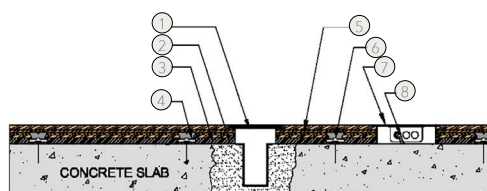
- 1. 3" x 4" (76mm x 101mm) Vent Cove Base
- 2. Vapor Barrier
- 3. AacerLoc™ Channel
- 4. 1/2" (12mm) Channeled Performance Foam
- 5. MFMA Maple Flooring 33/32" x 2 1/4" (26mm x 57mm)
- 6. Concrete Fastener
- 7. Steel Clip

## THRESHOLD



- 1. 1/4" (6mm) Aluminum Threshold
- 2. AacerLoc™ Channel
- 3. Vapor Barrier
- 4. MFMA Maple Flooring 33/32" x 2 1/4" (26mm x 57mm)
- 5. Concrete Fastener
- 6. Steel Clip

## EQUIPMENT



- 1. Floor Plate
- 2. Vapor Barrier
- 3. 1/2" (12mm) Channeled Performance Foam
- 4. AacerLoc™ Clip and Channel
- 5. MFMA Maple Flooring 33/32" x 2 1/4" (26mm x 57mm)
- 6. Concrete Fastener
- 7. Flush Electrical Box or Scorer's Box
- 8. Flexible Conduit

*It is the policy of Aacer Flooring to continuously improve its line of products. Therefore, Aacer Flooring reserves the right to change, modify or discontinue systems, specifications and accessories of all products at any time without notice or obligation to purchaser.*