

AacerFlex™ TP with MP Sport™

FLOATING SYSTEMS

AacerFlex™ TP with MP Sport™ combines the best characteristics of wood and synthetic sports floors by allowing multiple design options for a variety of sports and uses. This flooring system will provide sufficient force reduction, increased energy return and outstanding ball rebound characteristics over its long life.



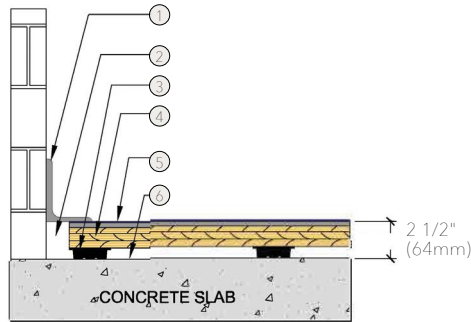
AcerFlex™ TP with MP Sport™

AcerFlex™ TP with MP Sport™ is the perfect choice for high-volume, multipurpose facilities that require a floor that integrates load bearing ability and enhances athletic performance. Seamlessly combine your wood floor with a multi-use synthetic floor.



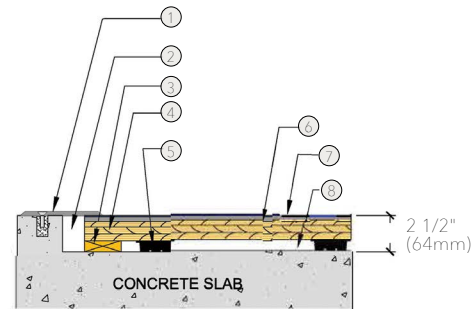
- 1. Precision-milled Acer Maple
- 2. MP Sport™
- 3. (1) Layer 3/8" (10mm) NOM. APA Sheathing
- 4. (2) Layers 15/32" (12mm) NOM. APA Sheathing
- 5. 3/4" (19mm) TriPower™ Pad

WALL BASE



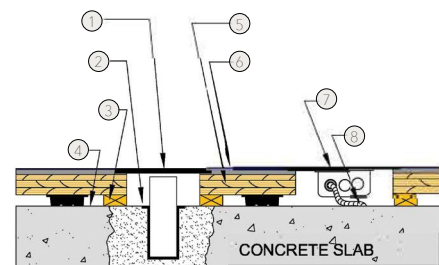
- 1. 3" x 4" (76mm x 101mm) Vent Cove Base
- 2. 1 1/2" (38mm) Min. Expansion Space
- 3. 3/4" (19mm) TriPower™ Pad
- 4. Two layers 15/32" (12mm) NOM. APA Sheathing
One layer 3/8" (10mm) NOM. APA Sheathing
- 5. MP Sport™ 8mm Base with 2mm Wear Layer - Total Thickness: 0.394" (10mm)
- 6. Vapor Barrier

THRESHOLD



- 1. 1/4" (6mm) Aluminum Threshold
- 2. 1 1/2" (38mm) Min. Expansion Space
- 3. Solid Blocking
- 4. Two layers 15/32" (12mm) NOM. APA Sheathing
- 5. 3/4" (19mm) TriPower™ Pad
- 6. 3/8" (10mm) NOM. APA Sheathing
- 7. MP Sport™ 8mm Base with 2mm Wear Layer - Total Thickness: 0.394" (10mm)
- 8. Vapor Barrier

EQUIPMENT



- 1. Floor Plate
- 2. 1 1/2" (38mm) Min. Expansion Space Required at all Insert & Electrical Penetrations
- 3. Solid Blocking at Floor Insert Penetrations
- 4. Vapor Barrier
- 5. Two layers 15/32" (12mm) NOM. APA Sheathing
One layer 3/8" (10mm) NOM. APA Sheathing
- 6. MP Sport™ 8mm Base with 2mm Wear Layer - Total Thickness: 0.394" (10mm)
- 7. Flush Electrical Box or Scorer's Box
- 8. Flexible Conduit

Certified



Green Status and LEED Contributors



- FSC® Certified Maple - MRc7
- FSC® Certified Subfloor Components - MRc7
- EQ - 4.2
- Regional Materials - MRc5.1 & 5.2

Optional Versions

50 duro blue, 70 duro red TriPower™, AcerFlex, EcoDIN, 1/2" TriPower™ Pad

Resilience

TriPower™ Pad, MP Sport 8+2
**other pad options available*

Slab Depression

3/4" (19mm) TriPower™ Pad, AcerFlex

- 25/32" (20mm) flooring – 2 1/2" (64mm)
- 33/32" (26mm) flooring – 2 3/4" (70mm)

1/2" (12mm) TriPower™ Pad

- 25/32" (20mm) flooring – 2 1/4" (57mm)
- 33/32" (26mm) flooring – 2 1/2" (64mm)

7/16" (11mm) EcoDIN Pad

- 25/32" (20mm) flooring – 2 1/8" (55mm)
- 33/32" (26mm) flooring – 2 7/8" (73mm)

Subfloor Construction

Plywood

System Type

Floating

Testing Laboratory



Warranty

Lifetime available

It is the policy of Acer Flooring to continuously improve its line of products. Therefore, Acer Flooring reserves the right to change, modify or discontinue systems, specifications and accessories of all products at any time without notice or obligation to purchaser.



see us at Sweets.com

