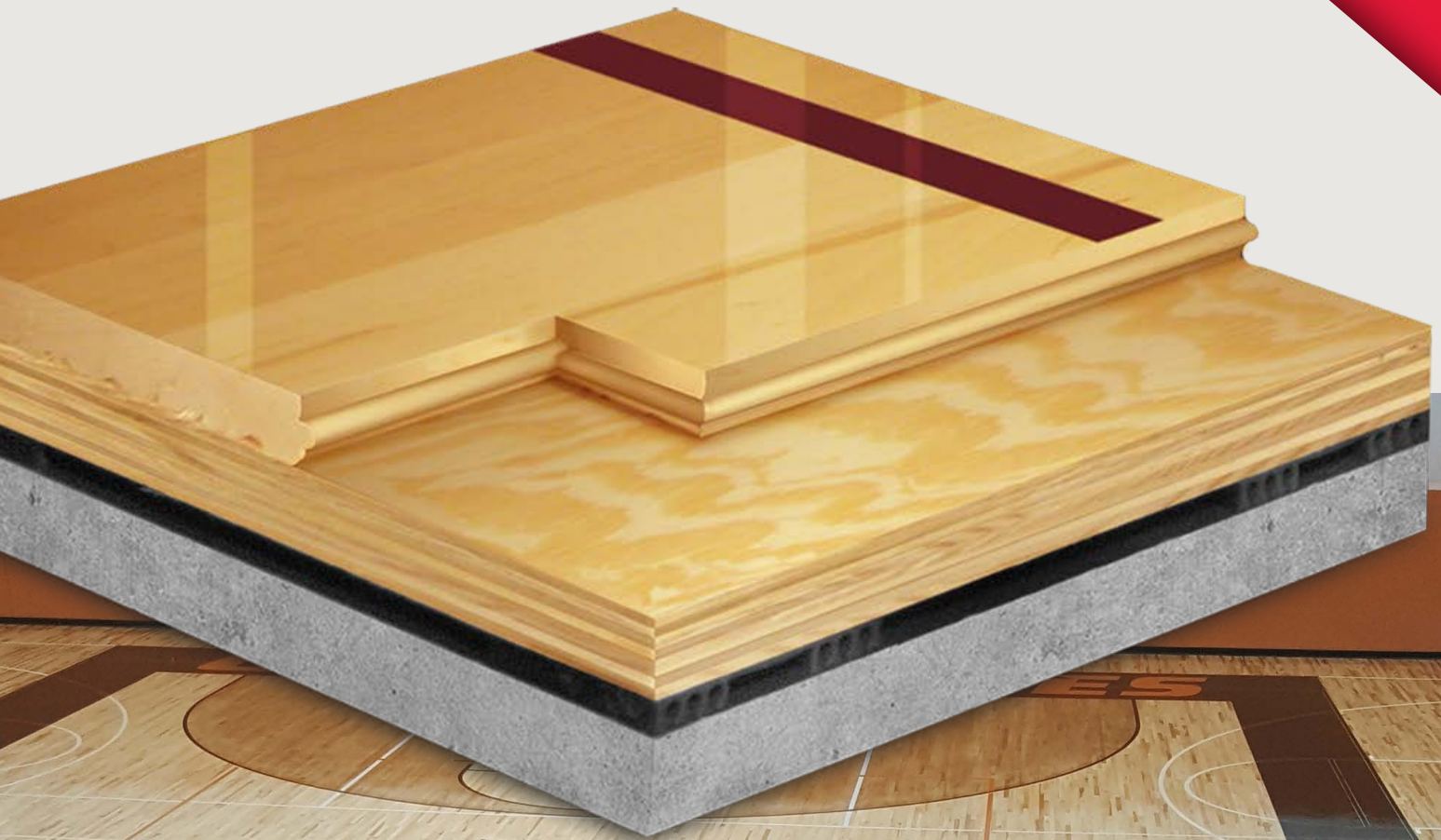


AacerCush II

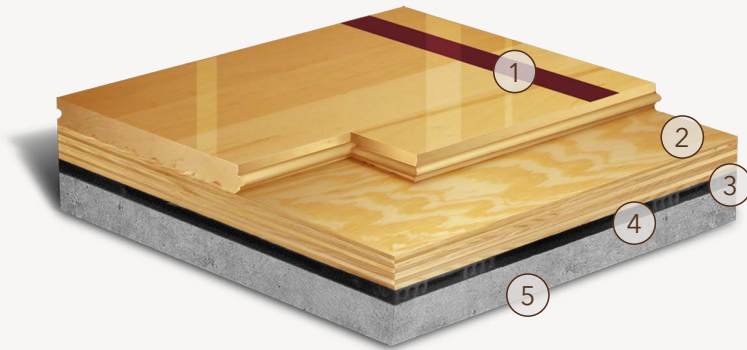
FLOATING SYSTEMS

The AacerCush II floor system combines Aacer maple flooring with 2 layers of APA underlayment and resilient pads. The result is an economic, versatile athletic floor with increased shock absorbency and energy return that helps reduce injuries. This widely used floating sport floor system is ideal for field houses, gymnasiums, multipurpose rooms and dance floors.



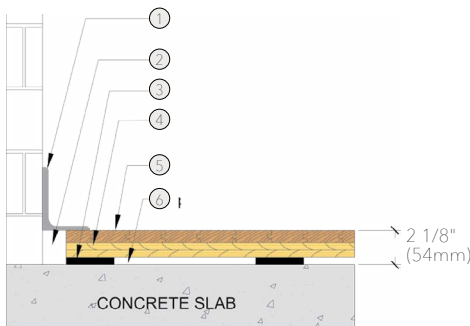
AcerCush II

Increased structural integrity, shock absorbency and energy return makes the AcerCush II one of the most widely accepted athletic flooring systems for field houses, combination synthetic and wood facilities, gymnasiums, dance floors, stages and multipurpose rooms.



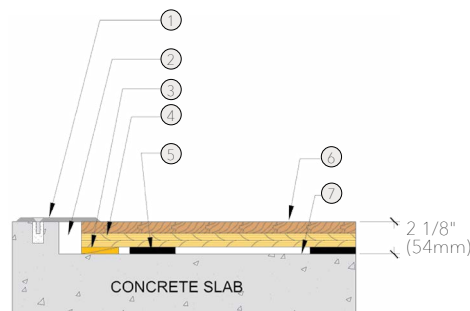
- | | |
|---|---------------------------------------|
| 1. Precision-milled Acer Maple | 3. 3/8" (10mm) AcerCush Resilient Pad |
| 2. Two layers of 15/32" (12mm) NOM. Exposure 1, APA Rated Sheathing | 4. 6mil Polyethylene Vapor Barrier |
| | 5. Concrete |

WALL BASE



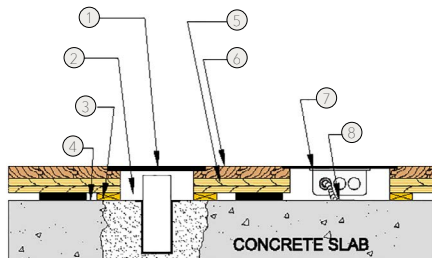
- 3" x 4" (76mm x 101mm) Vent Cove Base
- 1 1/2" (38mm) Min. Expansion Space
- 3/8" (10mm) AcerCush Pad
- Two layers 15/32" (12mm) NOM. Exposure 1 APA Rated Sheathing
- MFMA Maple Flooring 25/32" x 2 1/4" (20mm x 57mm)
- Vapor Barrier

THRESHOLD



- 1/4" (6mm) Aluminum Threshold
- 1 1/2" (38mm) Min. Expansion Space
- Solid Blocking
- Two layers 15/32" (12mm) NOM. Exposure 1 APA Rated Sheathing
- 3/8" (10mm) AcerCush Pad
- MFMA Maple Flooring 25/32" x 2 1/4" (20mm x 57mm)
- Vapor Barrier

EQUIPMENT



- Floor Plate
- 1 1/2" (38mm) Min. Expansion Space Required at all Insert & Electrical Penetrations
- Solid Blocking at Floor Insert Penetrations
- Vapor Barrier
- Two layers 15/32" (12mm) NOM. Exposure 1 APA Rated Sheathing
- MFMA Maple Flooring 25/32" x 2 1/4" (20mm x 57mm)
- Flush Electrical Box or Scorer's Box
- Flexible Conduit

Certified



Green Status and LEED Contributors



- FSC® Certified Maple - MRc7
- FSC® Certified Subfloor Components - MRc7
- EQ - 4.2
- Regional Materials - MRc5.1 & 5.2

Optional Versions

EcoDIN, 1/4" and 1/2" Performance Foam
**other pad options available*

Resilience

AcerCush Pads

Slab Depression

3/8" (10mm) AcerCush Pad

- 25/32" (20mm) flooring – 2 1/8" (54mm)
- 33/32" (26mm) flooring – 2 3/8" (60mm)

5/8" (16mm) AcerCush Pad

- 25/32" (20mm) flooring – 2 3/8" (60mm)
- 33/32" (26mm) flooring – 2 5/8" (67mm)

1/4" (6mm) Performance Foam

- 25/32" (20mm) flooring – 2" (50mm)
- 33/32" (26mm) flooring – 2 1/4" (57mm)

1/2" (12mm) Performance Foam

- 25/32" (20mm) flooring – 2 1/4" (57mm)
- 33/32" (26mm) flooring – 2 1/2" (64mm)

Subfloor Construction

Plywood

System Type

Floating

Testing Laboratory



Warranty

Lifetime available

It is the policy of Acer Flooring to continuously improve its line of products. Therefore, Acer Flooring reserves the right to change, modify or discontinue systems, specifications and accessories of all products at any time without notice or obligation to purchaser.



see us at Sweets.com

