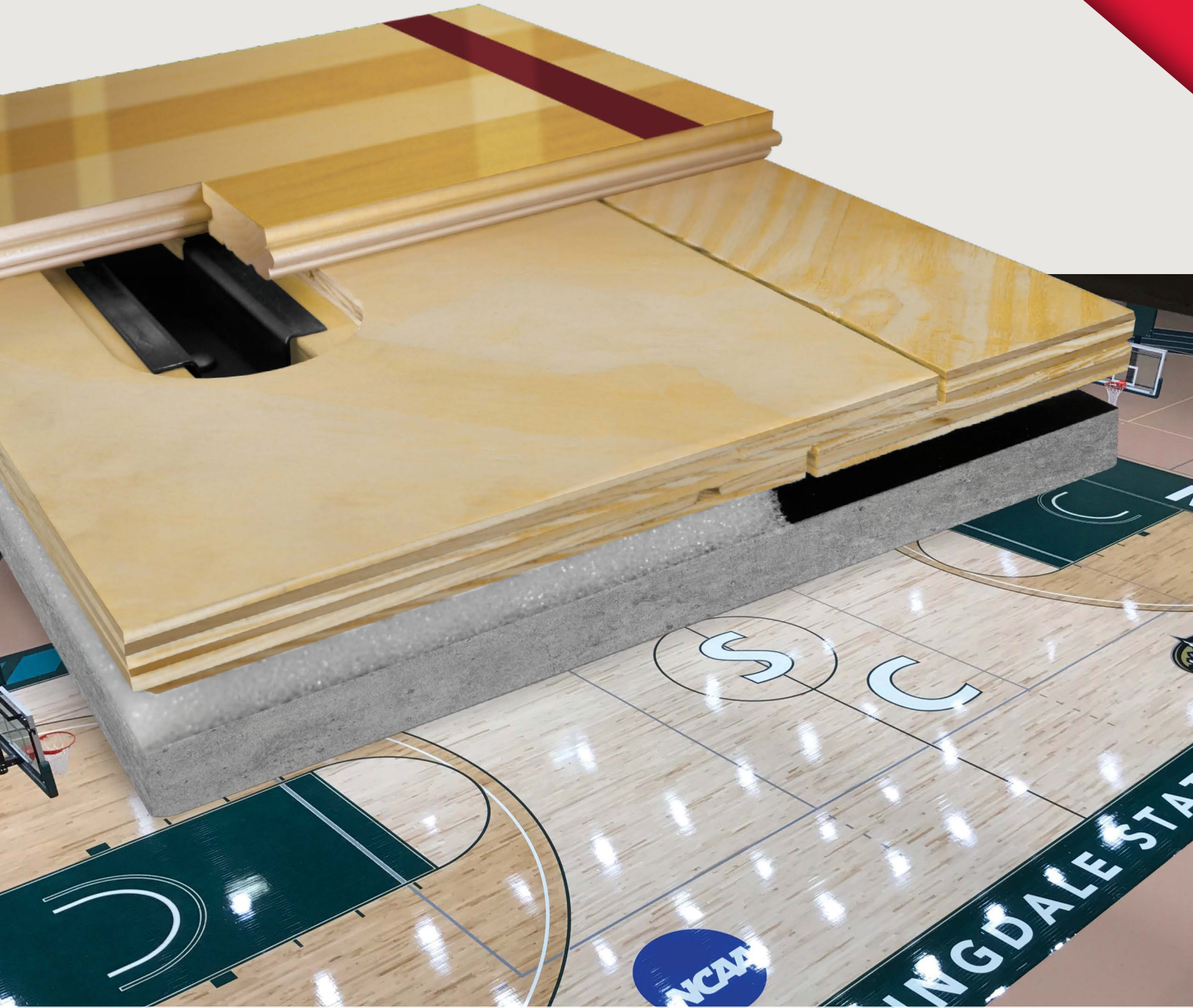


# AacerChannel™ VLP HC

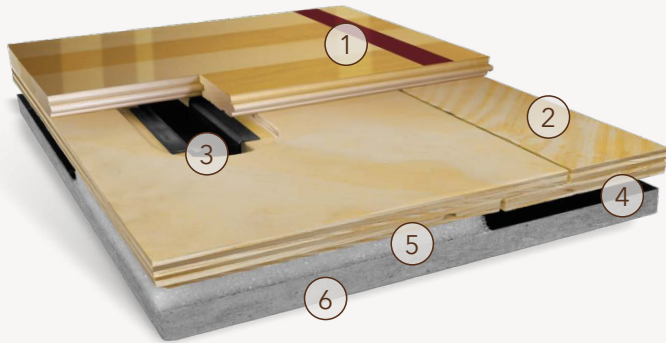
## FIXED RESILIENT SYSTEMS

The AacerChannel™ VLP HC performance sports floor system provides the resiliency and safety of a floating floor and the stability of an anchored system. The floor's 100% factory assembled panels utilizing sectional Aacer Hat Channel ensures uniform performance and fast installation. This system is ideal for facility retrofit projects and facilities requiring lower profiles. AacerChannel™ VLP HC is fully EN14904, DIN18032-2 and MFMA PUR Compliant.



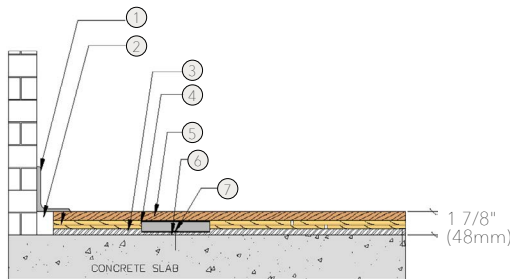
# AcerChannel™ VLP HC

AcerChannel™ VLP HC is a fixed resilient sports performance floor system that features a monolithic subfloor with full flex and a full-thickness APA engineered underlayment to maximize system performance. The result is a DIN, EN and PUR compliant floor with increased stability, shock absorbency, energy return and low vibration.



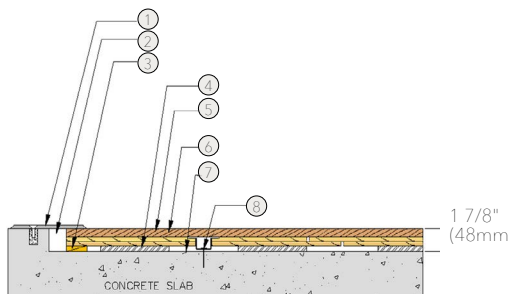
- 1. Precision-milled Acer Maple
- 2. Integrated Panels form a Monolithic Subfloor
- 3. Collared Steel Drive Pin
- 4. 6mil Polyethylene Vapor Barrier
- 5. Performance Foam
- 6. Concrete

## WALL BASE



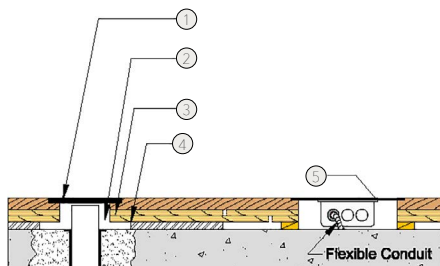
- 1. 3" x 4" (76mm x 101mm) Vent Cove Base
- 2. 1 1/2" (38mm) Min. Expansion Space
- 3. 1/2" (12mm) Continuous Performance Foam Strips
- 4. Pre-Engineered AcerChannel™ VLP HC Panel
- 5. MFMA Maple Flooring 25/32" x 2 1/4" (20mm x 57mm)
- 6. Vapor Barrier
- 7. Acer Anchor Channel

## THRESHOLD



- 1. 3" x 4" (76mm x 101mm) Vent Cove Base
- 2. 1 1/2" (38mm) Min. Expansion Space
- 3. Solid Blocking at Doorways & High Load Areas
- 4. 1/2" (12mm) Continuous Performance Foam Strips
- 5. Pre-Engineered AcerChannel™ VLP HC Panel
- 6. MFMA Maple Flooring 25/32" x 2 1/4" (20mm x 57mm)
- 7. Vapor Barrier
- 8. Acer Anchor Channel

## EQUIPMENT



- 1. Floor Plate
- 2. 1 1/2" (38mm) Min. Expansion Space Required at all Insert & Electrical Penetrations
- 3. Pre-Engineered AcerChannel™ VLP HC Panel
- 4. 1/2" (12mm) Continuous Performance Foam Strips
- 5. Flush Electrical Box or Scorer's Box

## Anchorage

## Certified



## Green Status and LEED Contributors



- FSC® Certified Maple - MRc7
- FSC® Certified Subfloor Components - MRc7
- EQ - 4.2
- Regional Materials - MRc5.1 & 5.2

## Resilience

Continuous Performance Foam Strips  
\*Contact your Regional Sales Manager for other options

## Slab Depression

1/2" (12mm) Performance Foam  
• 25/32" (20mm) flooring – 1 7/8" (48mm)  
• 33/32" (26mm) flooring – 2 1/8" (54mm)

## Subfloor Construction

Pre-manufactured panels

## System Type

Fixed Resilient

## Testing Laboratory



## U.S. Patent #

#5,647,183

## Warranty

Lifetime available

*It is the policy of Acer Flooring to continuously improve its line of products. Therefore, Acer Flooring reserves the right to change, modify or discontinue systems, specifications and accessories of all products at any time without notice or obligation to purchaser.*



see us at  
**Sweets.com**

