

AacerChannel™ EN-DIN

FIXED RESILIENT SYSTEMS

The AacerChannel™ EN-DIN performance sports floor system provides the resiliency and safety of a floating floor and the stability of an anchored system. This unique combination is ideal for large field houses and facilities that incorporate both wood and synthetic flooring.



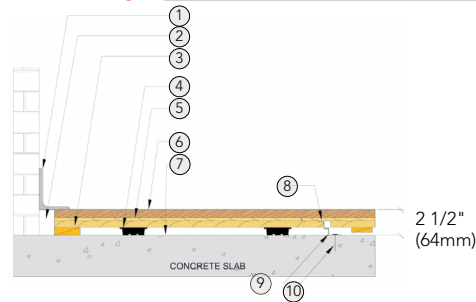
AcerChannel™ EN-DIN

AcerChannel™ EN-DIN enhances performance in gymnasiums, dance floors and multipurpose facilities.



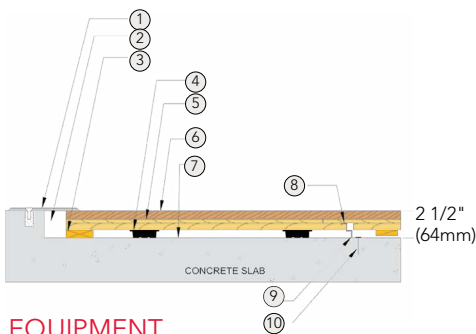
- | | |
|---|--|
| 1. Precision-milled Acer Maple | 4. 16 gauge Steel Anchored to Concrete |
| 2. Integrated Panels form a Monolithic Subfloor | 5. 6 mil Polyethylene Vapor Barrier |
| 3. TriPower™ Pad | 6. Concrete |

WALL BASE



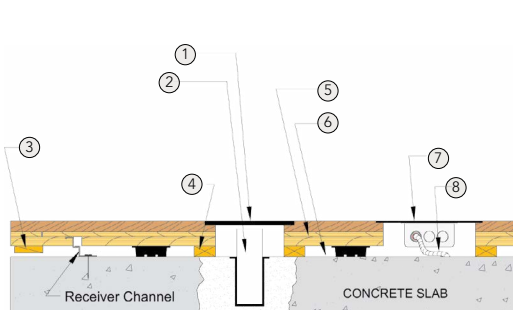
- 3" x 4" (76mm x 101mm) Vent Cove Base
- 1 1/2" (38mm) Min. Expansion Space
- Solid Blocking at Doorways & High Load Areas
- 3/4" (19mm) TriPower™ Pad
- Pre-Engineered AcerChannel™ Panel
- MFMA Maple Flooring 25/32" x 2 1/4" (20mm x 57mm)
- Vapor Barrier
- Receiver Channel
- Anchor Channel
- Concrete Fastener

THRESHOLD



- 1/4" (6mm) Aluminum Threshold
- 1 1/2" (38mm) Min. Expansion Space
- Solid Blocking at Doorways and High Load Areas
- 3/4" (19mm) TriPower™ Pad
- Pre-Engineered AcerChannel™ Panel
- MFMA Maple Flooring 25/32" x 2 1/4" (20mm x 57mm)
- Vapor Barrier
- Receiver Channel
- Anchor Channel
- Concrete Fastener

EQUIPMENT



- Floor Plate
- 1 1/2" (38mm) Min. Expansion Space Required at all Insert & Electrical Penetrations
- 1/2" (12mm) Stop Blocking for Rolling Load Protection
- Solid Blocking at Floor Insert Penetrations
- Pre-Engineered AcerChannel™ Panel
- Vapor Barrier
- Flush Electrical Box or Scorer's Box
- Flexible Conduit

Anchorage

Certified

Green Status and LEED Contributors

Resilience

Slab Depression

Subfloor Construction

System Type

Testing Laboratory

U.S. Patent #

Warranty

Drill and Pin



- FSC® Certified Maple - MRc7
- FSC® Certified Subfloor Components - MRc7
- EQ - 4.2
- Regional Materials - MRc5.1 & 5.2

TriPower™ Pads

*Other pad options available.

3/4" (19mm) TriPower™ Pads

- 25/32" (20mm) flooring – 2 1/2" (64mm)
- 33/32" (26mm) flooring – 2 3/4" (70mm)

Pre-manufactured panels

Fixed Resilient



#5,647,183

Lifetime available

It is the policy of Acer Flooring to continuously improve its line of products. Therefore, Acer Flooring reserves the right to change, modify or discontinue systems, specifications and accessories of all products at any time without notice or obligation to purchaser.



see us at Sweets.com

