

The most adaptable floor system for today's variable facility needs




PowerPlay Series

A performance sports floor system with shock absorption and resilience at the highest value. This unique combination of high performance, economics and short installation time enhances athletic effectiveness in competition gymnasiums, multipurpose rooms and dance floors. **PowerPlay®** is also available in a DIN compliant version where maximum performance is essential.



Pre-engineered panel to maximize performance and system integrity. Simple and easy panel installation.

Precision-milled AcerFit maple



Acer performance pad (Bi-Power® MT upgrade shown - see Pad Options for details)

Cantilevered plywood sleepers make for increased flex.

Fully anchored to substrate

FEATURES

- Increased shock absorbency/energy return
- Quick and easy installation
- Improves athletic performance
- Reduces injuries
- Able to withstand a wide range of changes in environmental conditions
- Ideal for field houses, gymnasiums, dance floors, stages or multipurpose rooms
- Low- or high-profile systems available for retrofits

Part I – GENERAL

- A. An anchored performance sports floor system consisting of vapor barrier, pre-engineered cushioned panels, and Acer maple flooring.
1. The concrete slab depression for 25/32" and 33/32" maple flooring with the PowerPlay II system shall be 2-3/8" and 2-5/8" respectively.
- B. See general specifications on page 4.

Part II – PRODUCTS

2.1 – Materials

- A. Vapor barrier shall be 6-mil polyethylene.
- B. Subfloor
Pre-engineered panels as manufactured by Acer Flooring with AcerFlex pads.

PAD
Standard: 3/4" AcerFlex Pad
Options: CP (red) competition basketball MT (orange) for gymnasiums LP 12mm low-profile for retrofits



- C. Flooring – Acer Maple
Northern Hard Maple flooring tongued, grooved and end-matched as manufactured by Acer Flooring. Flooring will be graded, marked and stamped in accordance with the standards established by the Maple Flooring Manufacturers Association (MFMA).

SIZE
Standard: 25/32" x 2-1/4" or 25/32" x 2-1/2"
Options: • 25/32" x 1-1/2" • 33/32" x 1-1/2" • 33/32" x 2-1/4"

GRADE
Standard: 2nd & Better Grade
Options: 1st, 3rd, 3rd and Better

- D. Fasteners
1. Anchors – modified steel drivepins (1" penetration minimum) 5 per panel.
 2. Flooring fasteners shall be 2" barbed cleats..
- E. Wall base
Shall be 3" x 4" molded vent cove base with premolded outside corners.

Part III – EXECUTION

3.1 – Pre-Installation Inspection

- A. Floor installer shall verify slab tolerance of concrete and report any corrections to General Contractor and Architect in writing. Room shall be broom cleaned and free of any foreign material.
- B. Floor installer shall document site and working conditions prior to and during installation. This documentation shall become a part of any warranty and may or may not affect fulfillment of any warranty.

3.2 – Installation

- A. Cover entire slab with 6-mil polyethylene, sealing and lapping joints a minimum of 6".
- B. Subfloor
 1. PowerPlay II panels shall be laid perpendicular to finish flooring 8" apart. Allow 1/4" space between ends of abutted panels. Mechanically fasten panel to the slab with concrete fasteners (1" min. penetration). Stagger panels when beginning each row to create a brick pattern throughout the subfloor. Apply 1" screws or staples to secure panels tabs.

2. Load Requirements – Install solid blocking under bleachers in the stacked position. Install stop blocking under bleachers in the extended position or heavy load areas as required.
3. For special circumstances, please consult Aacer.

C. Aacer Maple Flooring

1. Install Aacer maple flooring parallel with the long dimension of the room. Flooring shall be power nailed every 10" to 12" O.C. with all end joints properly driven tight.
2. Expansion joints may be required between flooring strips intermittently throughout the floor. Requirements will be determined by site and geographical conditions.
3. Provide a minimum 1-1/2" expansion void at all walls and permanent obstructions.

3.3 – Floor Sanding

- A. Machine sand entire floor with multiple grit papers to a smooth and uniform surface, free from edger marks and drum drops.

- B. Remove all sanding dust and lint from entire surface by vacuum and/or tack.

3.4 – Finishing and Gamelines

- A. Inspect entire floor to be sure surface is ready to accept seal/finish. Floor should be free from dust and debris.
- B. Apply seal and finish per manufacturer's label instructions. NOTE: Please refer to Aacer's Seal and Finish specification for recommendations.
- C. Floor shall be buffed, cleaned and tacked between coats.
- D. Gamelines – Before seal and finish coat apply game lines and logos as indicated by drawings between seal and finish coats. Paint shall be compatible with finish.

3.5 – Base Installation

Install vent cove base with cove base adhesive and/or mechanical attachment to wall. Use pre-molded outside corners and mitered inside corners.

3.6 – Documentation

Provide job condition documentation to owner with any warranties.

Extend your warranty with the ABCertified Finish System



Retrofits/Variable Profile Options available. Contact your Aacer Representative.

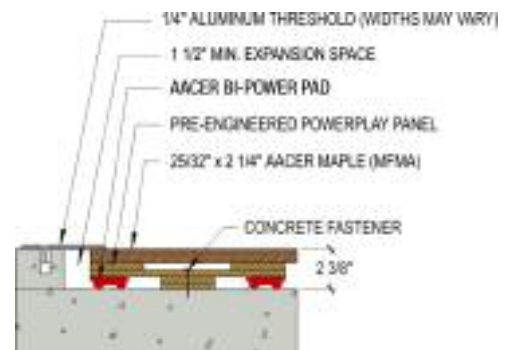
PowerPlay® DIN 2.0



Wall Base Detail



Threshold Detail



For complete details see Aacer shop drawings at www.aacerflooring.com

Pad Options

AacerFlex

- 2¹/₃" x 1³/₄" x 3/4"
- Good general purpose pad
- Greater shock-absorption for high-impact activities



BiPower® Pad

US Patent No. US D477,171 S

- 2³/₄" x 2" x 3/4"
- Premium performance pads
- Made of TPR rubber
- 4-point contact
- Immediate and intermittent contact creates greater load handling
- Special O-ring design ensures uniform response
- Best recuperation of any pad on the market
- Available in DIN-compliant systems
- Low profile option 12 mm pad



CP (red)

Competition Basketball



MT (orange)

High Performance (DIN 2.0)



Low-Profile Options

BiPower® LP

- Low-Profile for retrofits (12mm)



AacerCush

- 3" x 2" x 3/8"
- Traditional sleeper/panel pad
- Good general purpose
- Demonstrated value & reliability



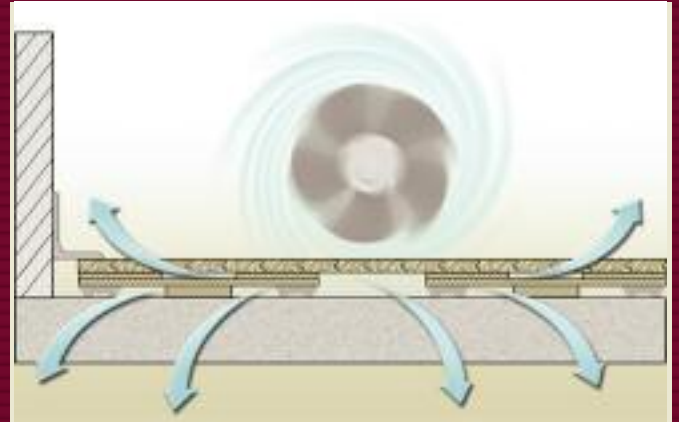
EcoDin

- 2" x 2" x 7/16"
- Made of recycled rubber
- Performance with a lower profile



Optional Aacer PowerVent Airflow System

The PowerVent Airflow System's unique design includes an exclusive under floor humidistat which detects moisture before it is noticeable by facility personnel.



Moisture trapped between the concrete slab and the wood floor often causes the floor to excessively expand and contract. The PowerVent Airflow System's performance engineered subfloor provides a natural criss-cross air flow that significantly reduces problems associated with excess moisture. Most importantly, an automatic mechanical air flow device also helps to prevent moisture damage to the floor system. This automatic feature of the PowerVent Airflow System is extremely beneficial during those times when no one is present to detect a moisture problem or catastrophe. Specify the **PowerVent Airflow System – the big winner in the battle against moisture.**

FEATURES & BENEFITS

- Automatic under-floor humidistat
- Multiple blowers for full coverage
- Design allows air flow to all layers of the system
- Maintains stability and uniform performance
- Ideal for areas with moisture conditions
- Detects moisture before it is noticeable by school personnel and automatically initiates drying process
- Works with any floor containing minimum air space
- Add on for problem floors
- Can be expanded if adding on to gym
- 2 systems can be used in large field houses



Part I – General Specifications

These specifications provide strict guidelines that must be adhered to for proper installation and performance of the materials supplied by Acer Flooring.

1.1 – Description

A. Related Work

1. Concrete Substrate – Section 03300
 - a. The concrete contractor shall furnish and install the concrete substrate depressing the slab in relation to surrounding areas in order to accommodate the floor system. The slab shall be smooth troweled and finished to a tolerance of 1/8" in a 10' radius. High spots shall be ground and low spots shall be filled with an approved leveling compound by the concrete contractors to meet the full approval of the floor installer.
2. Waterproofing Membrane – Section 07100
 - a. Concrete subfloor at or below grade shall be adequately vapor-proofed and/or waterproofed beneath the slab and at the perimeter of below grade walls by the general contractor using a suitable type membrane.
3. Thresholds – Section 08700
 - a. Thresholds or transitional entryways shall be designed and installed to adequately accommodate the expansion and contraction of the wood floor system. Thresholds and transitionways shall be installed by the flooring contractor.
4. Game Standard Inserts – Section 11500

1.2 – References

- A. MFMA Maple Flooring Manufacturers Association
- B. AcerFlooring technical literature

1.3 – Quality Assurance

- A. Manufacturer – Manufacturer of athletic flooring shall be Acer Flooring

- B. Flooring Contractor/Installer – The installation of the floor system described in these specifications shall be completed by a firm familiar with the requirements of the system specified and fully experienced in procedures required for installing athletic flooring manufactured by Acer Flooring.

1.4 – Submittals

- A. Submit Acer Flooring specification sheets, shop drawings and Maintenance Guidelines as required.
- B. Samples – submit the required number of samples of the specified System as requested by the owner/architect.

1.5 – Working Conditions

- A. The wood flooring and its components specified herein shall not be delivered or installed until all wet trades and overhead work is completed. This includes all masonry, painting, plaster, tile, marble and terrazzo, as well as all overhead mechanical trades. The building shall be fully enclosed and weather tight and all permanent windows and doorways shall be installed. Permanent heating and air conditioning shall be installed and working in accordance with building occupation requirements.
- B. The concrete substrate shall be determined fully cured by industry standards. Refer to MFMA concrete dryness requirements.
- C. During and after installation, building HVAC shall maintain a temperature and humidity range compatible with the expected high and low moisture content range of the flooring. The floor installer, based on the building's HVAC control and geographical situation, shall determine this range.
- D. Flooring should be acclimated as determined by flooring contractor. Moisture content of wood shall be consistent with the ambient conditions of the building as it will be maintained when occupied.

1.6 – Warranty and Disclaimer

- A. Acer Flooring, LLC, Peshtigo, WI, hereby warrants the materials, it has supplied to be free from manufacturing defects for a period of one year. THIS WARRANTY IS IN LIEU OF AND EXCLUDES ALL OTHER WARRANTIES EXPRESSED OR IMPLIED INCLUDING ANY IMPLIED WARRANTIES OF MERCHANTABILITY OR FITNESS FOR A PARTICULAR PURPOSE.
- B. This warranty is limited to the materials manufactured by and supplied by Acer Flooring, LLC. THIS WARRANTY EXCLUDES ANY CONSEQUENTIAL OR INCIDENTAL DAMAGES and, in the event of breach, Acer Flooring, LLC's sole liability and your exclusive remedies will be limited to repair or replacement of material and components supplied by Acer Flooring, LLC and proven to be defective by the manufacturing process.
- C. During the warranty period, the floor shall not be recoated without the approval of the flooring contractor.
- D. The jobsite documentation forms by the flooring contractor shall become a part of the warranty and both the owner and flooring contractor shall retain record of said forms as a permanent reference for any abrogation.
- E. Flooring contractor warrants the installation of the floor systems to be free from defects in materials and workmanship for a period of one year.
- F. It is the policy of Acer Flooring to continuously improve its line of products. Therefore, Acer Flooring reserves the right to change, modify or discontinue systems, specifications and accessories of all products at any time without notice or obligation to purchaser.

revised 02/06



P.O. Box 151 • 970 Ogden Rd. • Peshtigo, WI 54157
Toll-Free 877-582-1181 • Fax: 715-582-1182 • www.acerflooring.com



Performance
Tested

